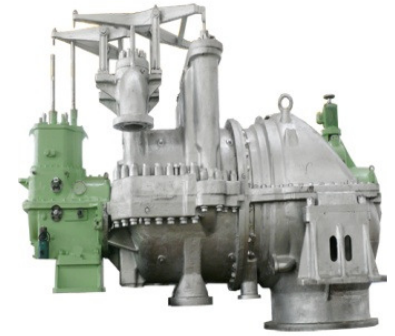


Extraction Condensing Steam Turbine

Features:

1. Various inlet and extraction steam parameters
2. Electric power with adjustable thermal load
3. Electric power, industrial using steam, electric load and thermal load can all be adjusted respectively
4. Can be run in pure condensing steam condition
5. Widely used in captive power generating, waste heat using, sugar-making, paper-making, petroleum, chemical industrial, etc. It can supply part of the lower parameters' steam to meet the needs of heating and industrial production while power generating.



Parameters

Model	Code	Power Ratcd/Max (MW)	Inlet			Extraction		SteamRate		Exhaust Pressure (MPa)	Weight (t)	Overall Dimensions LxWxH (mm)	Matching Generator
			Press (MPa)	Temp (°C)	Flow (t/h)	Press (MPa)	Flow Rated/Max (t/h)	Rated (kg/kw.h)	Pure condensing (kg/kw.h)				
C1.5-2.35/0.490	N2322S	1.5	2.35	390	17.8	0.49	12	11.87	5.89	0.008	12	3475x2060x2100	6500L/1500R
C1.5-2.35/0.78	N233S	1.5	2.35	390	18.4	0.78	12	12.27	5.9	0.008	12	3475x2060x2100	6500L/1500R
C1.5-2.35/0.981	N234S	1.5/1.5	2.35	390	19.6	0.981	12/15	12.566	5.932	0.0079	22	4320x2560x2830	QFC-1.5-2
C1.5-3.43/0.490	N2421S	1.5/1.5	3.43	435	16.1	0.49	12/15	10.7	5.6	0.0075	22.2	4238x2560x2663	QF-1.5-2
C3-2.35/0.490	N332S	3/3.3	2.35	390	27.1	0.49	18/20	9.02	5.12	0.0075	22	4268x2552x2822	QF-3-2
C3-2.35/0.981	N334S	3/3.3	2.35	390	34.3	0.981	20/25	10.92	5.42	0.007	22	4320x2550x2823	QF-3-3
C3-3.43/0.294	N341S	3/3.3	3.43	435	25.3	0.294	19/23	8.44	4.74	0.0075	22.2	4320x2558x2830	QF-3-2
C3-3.43/0.490	N342S	3/3.3	3.43	435	25.8	0.49	20/25	8.572	4.68	0.0073	22.2	4268x2550x2825	QF-3-2
C3-3.43/0.785	N343S	3	3.43	435	28	0.785	20/25	9.32	4.74	0.0073	22.2	4310x2558x2829	QF-3-2
C3-3.43/0.981	N344S	3/3.3	3.43	435	29.3	0.981	15/19	9.75	4.748	0.0072	22	4320x2558x2830	QF-3-2
C3-3.43/1.37	N346S	3/3.4	3.43	435	30.2	1.37	20/25	10.2	4.79	0.0068	22.2	4296x2558x2455	QF-3-2
C3-3.43/1.77	N348S	3/3.3	3.43	435	27.35	1.77	15/20	9.12	4.62	0.0071	28	4268x2558x2830	QF-3-2
C3-4.9/1.27	N355S	3	4.9	470	33.7	1.27	25/30	11.56	4.79	0.0049	23	4700x2570x2825	QF-3-2
C6-2.35/0.490	N432S	6	2.35	390	52.15	0.49	34/50	8.92	5.2	0.0071	23	4248x2558x2450	QF-6-2
C6-3.43/0.490	N442S	6/6.6	3.43	435	55.4	0.49	45/56	7.24	4.6	0.0071	22.2	4268x2560x2830	QF-6-2
C6-3.43/0.589	N4431S	6	3.43	435	50.3	0.589	35/55	8.39	4.68	0.0071	23.2	4248x2813x2258	QF-6-2
C6-3.43/0.785	N443S	6	3.43	435	59.1	0.785	45/55	9.87	4.65	0.0068	23	4248x2813x2258	QF-6-2
C6-3.43/0.981	N444S	6/6.6	3.43	435	61.8	0.981	45/56	10.3	4.7	0.0073	22.2	4248x2558x2830	QF-6-2
C6-3.43/1.27	N445S	6/6.6	3.43	435	64.08	1.27	45/60	10.7	4.663	0.0073	26	4296x2560x2450	QF-6-2
C6-3.43/1.57	N446S	6	3.43	435	65.3	1.57	45/60	10.8	4.61	0.007	26	4296x2560x2450	QF-6-2

Model	Code	Power Ratcd/Max (MW)	Inlet			Extraction		SteamRate		Exhaust Pressure (MPa)	Weight (t)	Overall Dimensions LxWxH (mm)	Matching Generator
			Press (MPa)	Temp (°C)	Flow (t/h)	Press (MPa)	Flow Rated/Max (t/h)	Rated (kg/kw.h)	Pure condensing (kg/kw.h)				
C6-4.90/0.490	N452S	6/6.6	4.9	435	50	0.49	40/45	8.3	4.54	0.006	29	4813x2705x2455	QF-6-2
C6-4.90/0.785	N4531S	6	4.9	470	41.18	0.785	30/40	6.84	4.3	0.0053	33	4785x2705x2458	QFW-6-2
C6-4.90/0.981	N454S	6/6.6	4.9	435	51	0.981	35/45	8.5	4.57	0.006	29	4813x2705x2458	QF-6-2
C6-4.90/1.76	N458S	6	4.9	435	53.13	1.76	30/40	9.13	4.98	0.005	29	4725x2705x2458	QF-6-2
C6-4.90/2.45	N4591S	6	4.9	435	66.3	2.45	45/50	11.05	4.54	0.005	33	4880x2705x2575	QF-6-2
C7-3.43/0.490	N5421S	7/7	3.43	435	53.3	0.49	35/45	7.62	4.58	0.0057	23	4268x2558x2458	QF-7-2
C7-3.43/0.785	N5431S	7	3.43	435	56.7	0.785	35/45	8.1	4.6	0.007	23	4374x2558x2458	QF-7-2
C7-3.43/1.27	N5451S	7	3.43	435	42	1.27	11/20	5.94	4.6	0.007	23	4296x2812x2258	QF-7-2
C7.5-3.43/0.490	N5422S	7.5	3.43	435	61.3	0.49	45/55	8.2	4.65	0.007	23	4250x2558x2452	QF-7.5-2
C7.5-3.43/0.981	N5441S	7.5	3.43	435	68	0.981	45/56	9.1	4.59	0.0062	23	4375x2558x2458	QF-7.5-2
C12-3.43/0.294	N541S	12/15	3.43	435	75	0.294	50/70	6.235	4.25	0.0049	60.5	6050x4200x2660	QF-12/15-2
C12-3.43/0.49	N542S	12/15	3.43	435	80	0.49	50/70	6.6	4.21	0.0049	61	6625x3660x3655	QF-12/15-2
C12-3.43/0.981	N544S	12/15	3.43	435	94	0.981	60/80	7.85	4.22	0.0049	60.5	6240x3660x3656	QF-12/15-2
C12-3.43/1.27	N545S	12/15	3.43	435	97	1.27	60/80	8.31	4.15	0.0049	61	6320x3660x3660	QF-12/15-2
C12-3.43/0.785	N543S	12/15	3.43	435	84	0.785	50/70	7.08	4.175	0.0055	62	6130x3650x3650	QF-12/15-2
C12-4.9/0.981	N554S	12/15	4.9	435	84	0.981	50/70	7.01	4.144	0.0049	60.5	6140x3660x3640	QF-12/15-2
C12-4.9/1.37	N556S	12/15	4.9	435	87	1.37	50/70	7.28	4.13	0.0049	60.5	6320x3660x3660	QF-12/15-2
C12-4.9/0.49	N552S	12/15	4.9	435	82	0.49	45/70	6.23	4.35	0.0049	52	6230x3660x6500	QF-12/15-2
C12-3.43/0.785	N543S	12/15	3.43	435	88.5	0.785	50/70	7.54	4.57	0.0049	61	6150x3660x3655	QF-12/15-2
C12-4.9/0.294	N551S	12	4.9	435	76.5	0.294	50/70	6.56	4.49	0.005	60.5	6050x3660x3655	QF-12-2
C12-4.9/0.785	N553S	12/15	4.9	470	82	0.785	50/70	7.07	4.3	0.005	60.5	6345x3660x3660	QF-12/15-2
C12-4.9/1.96	N558S	12/15	4.9	470	92.4	1.96	50/80	7.94	4.22	0.0049	62	6160x3965x3050	QF-12/15-2
C12-60/10	N555S	12	5.88	435	85.31	0.98	75	6.795	4.148	0.0042	62.5		
C15-4.9/0.981	N654S	15/18	4.9	435	96	0.981	50/80	7.02	4.38	0.0049	62	5150x4250x3050	QFW-12/15-2
C15-3.43/0.49	N642S	15/18	3.43	435	104.5	0.49	70/90	6.963	4.183	0.005	62	6245x3660x3660	QF-15/18-2
C15-3.43/0.981	N644S	15/18	3.43	435	111	0.981	60/70	6.84	4.48	0.0049	61	6140x3660x3660	QFW-15/18-2
C15-3.43/1.47	N646S	15	3.43	435	102	1.47	50/70	6.924	4.263	0.0049	62	6340x3660x3660	QF-15-2
C15-4.9/0.785	N653S	15/18	4.9	435	102	0.785	50/70	6.43	4.33	0.0049	62	6230x3660x3660	QF-15/18-2
C15-4.9/0.981	N654S	15/18	4.9	435	96	0.981	50/70	6.4	4.25	0.0049	62	6140x3660x3660	QF-15/18-2
C15-5.88/0.785	N663S	15/18	5.88	470	95	0.785	50/70	6.08	4.2	0.0049	61.5	6140x3660x3660	QF-15/18-2
C25-3.43/0.785	N743S	25/30	3.43	435	142.6	0.785	50/80	5.786	4.48	0.0049	76	7625x5050x2930	QF-30-2
C25-3.43/0.981	N744S	25	3.43	435	161.2	0.981	50	6.23	4.6	0.015	76	7625x5050x2930	QF-30-2
C25-4.9/0.981	N754S	25	4.9	470	150	0.981	130	5.99	3.993	0.0042			
C25-4.9/1.27	N755S	25	4.9	470	158.8	1.27	130	6.345	4.07	5.24	75	6697x4890x3685	

Model	Code	Power Ratcd/Max (MW)	Inlet			Extraction		SteamRate		Exhaust Pressure (MPa)	Weight (t)	Overall Dimensions LxWxH (mm)	Matching Generator
			Press (MPa)	Temp (°C)	Flow (t/h)	Press (MPa)	Flow Rated/Max (t/h)	Rated (kg/kw.h)	Pure condensing (kg/kw.h)				
C25-8.83/0.39	N772S	25/30	8.83	535	140	0.392	85/100	5.56	4.13	0.0054	80	7805x4740x2860	QF-30-2
C25-8.83/0.785	N773S	25/30	8.83	535	145.6	0.785	50/90	5.97	3.89	0.005	71	7915x4400x2885	QF-30-2
C25-8.83/1.27	N775S	25/30	8.83	535	153	1.27	80/120	6.28	4.2	0.0049	90	7920x4450x2880	QF-30-2A
C25-8.83/3.92	N779S	25/30	8.83	535	209	3.92	120/150	8.5	4.01	0.0049	87	7935x4750x2820	QF-30-2
C50-8.83/0.118	N872S	50/60	8.83	535	235	0.118	160/200	4.71	3.66	0.0054	140	9500x6900x3500	
C50-8.83/0.981	N873S	50/60	8.83	535	189.9	0.981	100/160	5.131	3.709	0.0059			
C50-8.83/1.57	N875S	50/60	8.83	535	284	1.57	120/180	5.17	3.65	0.0053	135	9500x6900x3500	